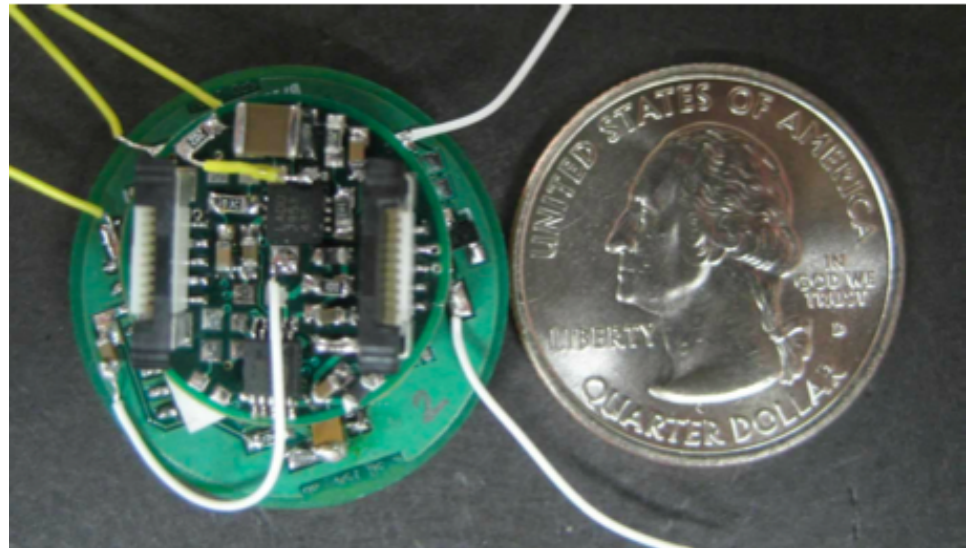
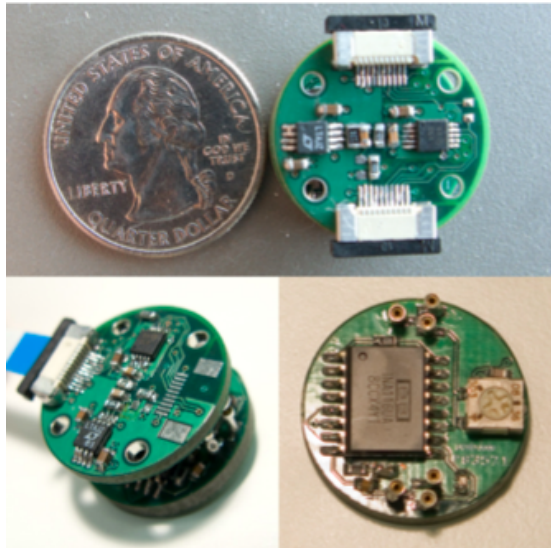


Non-contact electrode for EEG & EKG

- Electrode
 - 2 US quarter sized PCBs
 - Insulated copper fill through capacitive coupling

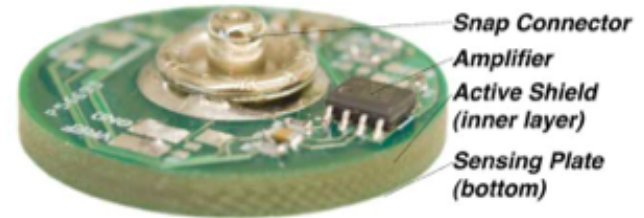


Schematic of the electrode

- Ultra-high input impedance front end amplifier
high-pass filter
 - INA116
 - LMP7702
- Differential Amplifier
band-pass filter
 - LTC6078
 - LT6010
- Analog-to-digital Converter
 - AD7691
 - ADS1299
- Microcontroller
 - Arduino (instead of PIC24F16KA102)

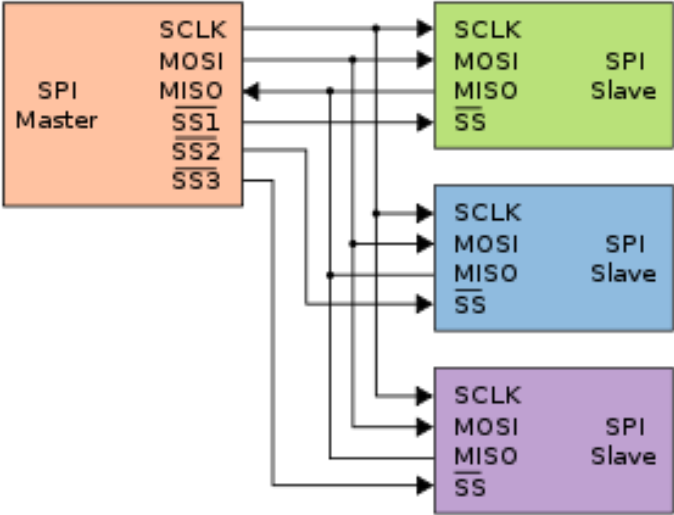
EAGLE software for board design

- Schematic
- Copper fill layer
- Active shield layer

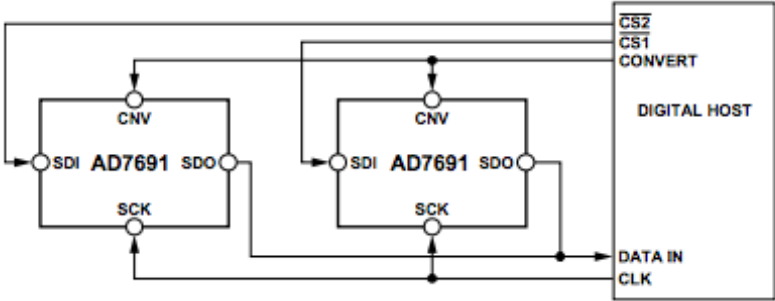


Daisy-chain multiple ADCs

- Serial Peripheral Interface (SPI)
- Single Master to Multiple Slaves



- Example of 2 AD7691s connected to an SPI-compatible digital host

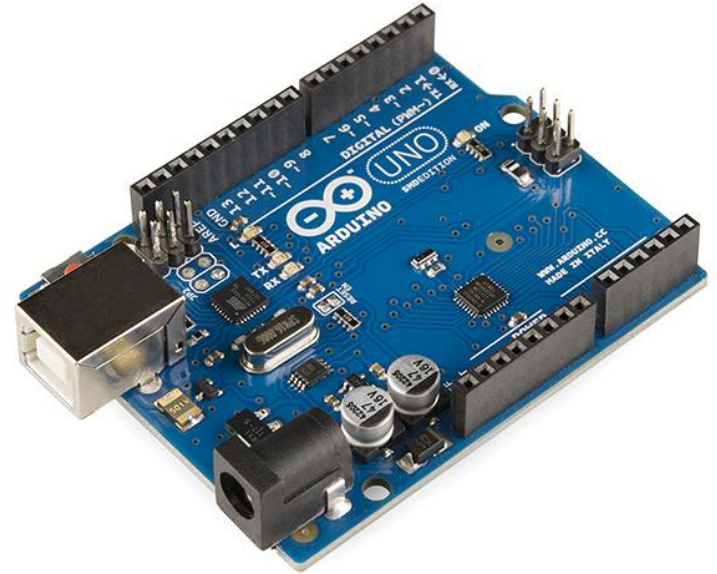


Microcontroller

Arduino Uno

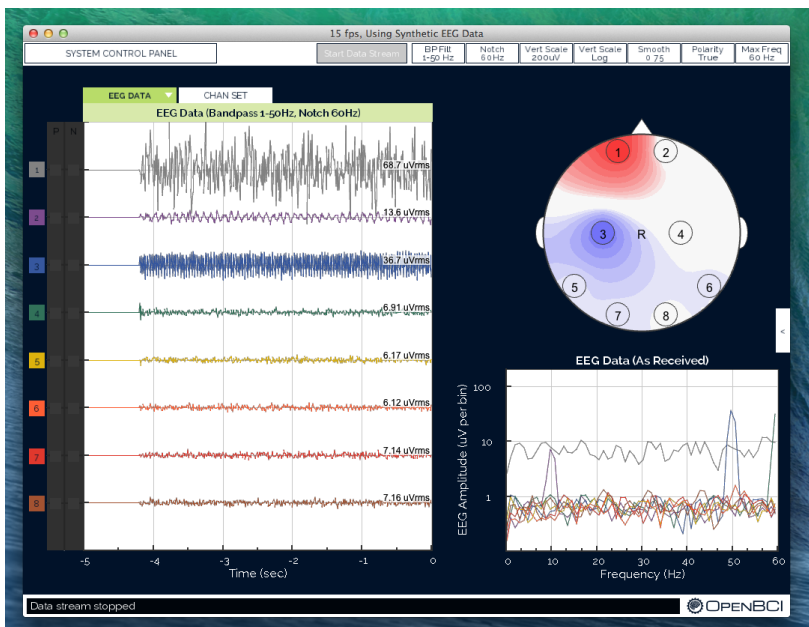
SPI Libraries for Arduino

OpenBCI/GitHub Libraries for Arduino \Leftrightarrow TI ADS1299



Software

OpenBCI GUI



Runs in Processing

